



# TRANSPORT & LOGISTICS

CAPABILITY STATEMENT

**WAGNERS**

# WAGNERS GROUP

## WAGNERS GROUP

Wagners is a diversified Australian construction materials and services provider and an innovative producer of New Generation Building Materials (NGBM). Our NGBM division is leading the way with high-strength, lightweight, low carbon alternatives to traditional construction materials. Established in 1989, Wagners is an ASX-listed company operating in domestic and international markets.

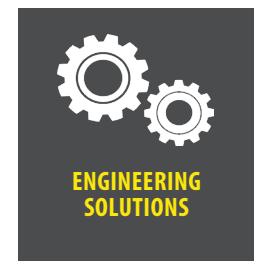
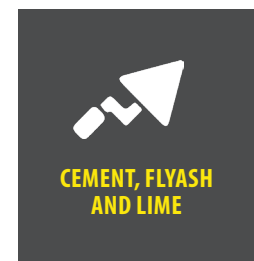
## NEW GENERATION BUILDING MATERIALS (NGBM)

Our Earth Friendly Concrete® (EFC®) and Composite Fibre Technologies (CFT) are pioneering more sustainable solutions for concrete and hardwood. Composite Fibre products are lightweight and have a long life span as they do not rust, rot or corrode.

## CONSTRUCTION MATERIALS AND SERVICES (CMS)

Wagners' Construction Materials and Services (CMS) division manufactures and sells cement, flyash, reinforcing steel and aggregates. We also provide mobile and on-site concrete batching, crushing and haulage services.

## WAGNERS GROUP PRODUCTS AND SERVICES



## PROJECT ENGINEERING SERVICES

Wagners Project Engineering Services work hand in hand with all divisions of the Wagners business to ensure the successful completion of every project, no matter the size or location.

The team collaborate with engineers to build Concrete Batch Plants, pultrusion machines to produce Composite Fibre products, bridge propping on project sites to transport equipment and a Wharf on the Brisbane River with the capacity to service cargo ships carrying up to 40,000 tonnes.

The Project Engineering Services division designs, certifies, fabricates, and installs structural steel and infrastructure. Additionally, we perform services, repairs, and maintenance on all vehicles and equipment, and custom modifications of OEM equipment.

**WAGNERS IS ISO 9001, ISO 14001 AND ISO 45001 CERTIFIED, ACCREDITED BY SAI GLOBAL.**





# TRANSPORT AND LOGISTICS

Wagners Transport has a presence across the country with sites in Toowoomba, Darwin, Townsville, Brisbane, Cloncurry, and Mount Isa.

We are well versed in bulk and break bulk shipping. Our shipping company, Wagners Chartering imports approximately 500,000 tonnes of raw materials per annum into Australia for our cement business through the wharf alongside our Pinkenba Cement facility and the Port of Townsville.

We also have significant experience internationally shipping break bulk freight to and from Australia.

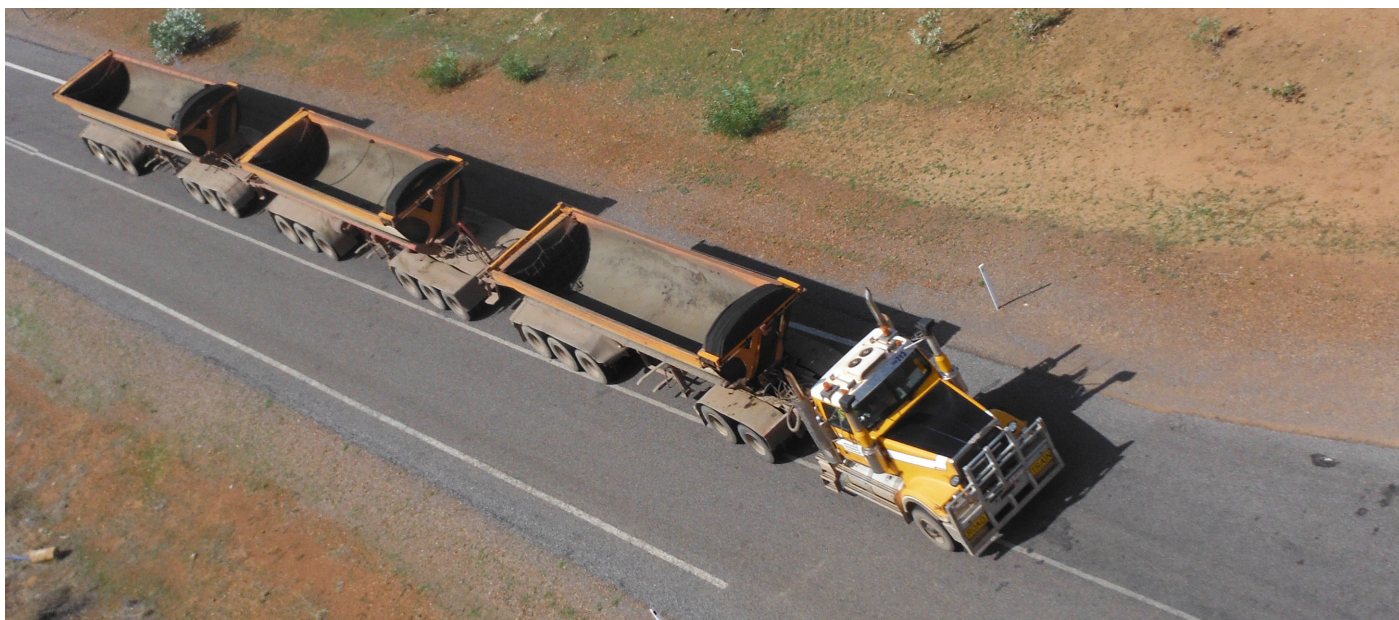
## **Cloncurry**

We have a 12-ha site on Powerhouse Road, Cloncurry, with an existing accommodation camp and potential for rail access. The site is currently used for equipment storage and as an operational base but could be developed to suit specific operational requirements.

## **Townsville and Brisbane**

The Townsville site has rail access, and the Brisbane site is adjacent to the Brisbane River and serviced by a bulk commodities wharf.





## FLEET

Wagners Transport is committed to providing high level customer service and a consistently reliable performance. We have the capability to supply transportation and logistical solutions in all states and territories of mainland Australia by utilising modern vehicles and highly trained drivers.

Our transport business has a large fleet of modern vehicles ranging from body trucks to quad trailer road trains, providing operational solutions for any transport project.

We have higher-payload vehicles to reduce the number of vehicles required on major projects for significant efficiency and environmental gains.

All our vehicles are purpose-designed and built for our needs and are the basis for an effective contemporary haulage service.

### Our transport services include:

- » Bulk haulage
- » Heavy haulage (including tri axle drop deck trailers, tri axle and quad floats, and dolly combinations)
- » Container and ISO vessel transport
- » Side lifters and tipping skels
- » Pneumatic powder tankers
- » General Freight
- » Container forklifts and the provision and management of containers and vessels

Our fleet and clients are supported by additional company-owned equipment, which includes:

- » Excavators to 125 tonnes
- » Front end loaders to 8m<sup>3</sup> bucket capacity
- » Integrated tool carriers
- » Articulated dump trucks to 40 tonnes and rigid dump trucks to 60 tonnes
- » Water trucks (on and off road)
- » Mobile blending plants and pug mills to 400m<sup>3</sup> per hour capacity
- » Mobile workshops
- » Pavers and slip form machines
- » Slinger (conveyor) trucks
- » Concrete agitators

## ENVIRONMENTAL INITIATIVES

### Fuel efficiency

We operate our fleet on three sites with a higher fuel efficiency than the set target, saving overall emissions per year and providing cost efficiencies to our clients.

### Reduced environmental impact

Wagners' fleet operates with fuel efficient, modern equipment that complies with emission standards. Our state-of-the-art Volvo FH trucks are equipped with wind deflectors that significantly lower their fuel consumption.

### Drive axle lift feature

Selected Wagners trucks are fitted with drive axle lift features that allow the drive axle to disengage when not required, reducing fuel consumption by up to four per cent.



# SAFETY AND QUALITY

Wagners' Management Systems include Quality Assurance third party certification to ISO 9001, National Heavy Vehicle Accreditation (NHVAS) for Mass and Maintenance Management, a safety management system which is aligned with ISO 45001 and an environmental management system which is aligned with ISO 14001.

We maintain a culture which ensures that the safety of our employees and all those we interact with is held in the highest regard through a set of 10 Golden Rules related to safety considerations. We also hold a monthly two-hour safety session with the board members through to site supervisor level, including an invitation for any staff who can attend, to discuss and review safety performance and monitoring of key performance indicators across the business.

Driver training is critical to our operations, and we have a full-time driver trainer and a number of Subject Matter Experts who verify the competency of our operators prior to commencement with our company and during their employment with us. We also have a number of driver training programs that we use to continually educate our operators.

Wagners has strong relationships with the bodies that establish and regulate the policies for the transport



industry, including Traffic and Main Roads and the National Heavy Vehicle Regulator (NHVR) and has a history of being pro-active in the use of innovative combinations to improve the efficiency of transport operations.

Depending on application requirements, we employ a range of technology including GPS tracking, fatigue management, and camera devices to monitor the operation of our vehicles and driver behaviour and as a tool for incident investigation.

## DRIVER TRAINING

Our driver trainer coordinates the pre-employment driver assessments, prepares, and ensures drivers receive relevant internal and external training, and regularly verifies driver competencies.

Drivers undergo training on transport operations, fatigue management, and load restraint, as well as other project or task specific training.

Depending on the project, our fleet is fitted with fatigue monitoring devices, driver and forward-facing cameras, and GPS tracking.

## SAFETY INITIATIVES

### Satellite tracking via GPS

Wagners' heavy vehicle fleet has been fitted with a Navman wireless satellite tracking system. The Navman system allows the tracking of a vehicle's location, speed, harsh braking, harsh cornering, and over-speeds in geofenced areas as well as over-speeds of the heavy vehicle speed limit of 90kph.

### Driver-facing, forward-facing and side-facing cameras

All Wagners Transport units are fitted with driver-facing, forward-facing, and side-facing cameras to ensure the safety of our drivers and other drivers on the road.

### Fatigue monitoring cameras

The Wagners Transport fleet is fitted with LSM Technologies Driver Fatigue (Distraction) Monitors to always monitor the fatigue and distraction levels of our drivers. The built-in video analytics are self-configuring and work by tracking drivers' eye lids and pupil dilation using proprietary algorithms. The system warns the driver with real-time audible alerts when symptoms of fatigue or distracted driving are recognised.

These technological additions provide us with the knowledge of the speed and location of every unit at any given time and ensures all drivers are abiding by the safety standards set by Wagners Transport and our clients.

## WAGNERS ARE COMMITTED TO THE SAFETY OF OUR DRIVERS AND OTHERS ON THE ROAD



## ENGINEERING SOLUTIONS

Our Engineering Solutions is a specialist in-house fabrication and repair workshop that supports all divisions of the business in developing equipment, keeping machinery and vehicles operational and producing custom-made components for projects.

We can modify Original Equipment Manufacturer (OEM) equipment to improve its suitability for task, manufacture equipment, and complete prompt and efficient repairs to our fleet at our company maintenance facility in Toowoomba and our mobile workshops. We employ a computerised maintenance management and procurement system to manage and maintain accurate maintenance and purchase details.

The Workshop also participates in the Best Practice Network, which benchmarks efficiency, quality, safety, and other measures relevant to the industry.





# MAJOR PROJECT EXPERIENCES

## OAKY CREEK BOWEN BASIN, QLD

2018 - CURRENT

- » Reject haulage contract
- » 1.3 million tonnes of rejects
- » 180 tonnes double road train side-tippers

## LADY LORETTA MT ISA, QLD

2018 - CURRENT

- » 14 trucks working 24 hours a day
- » Crushed lead and zinc ore
- » 1.6 million tonnes of ore and 700,000 tonnes of tailings
- » Quad combination side-tippers gross 158 tonnes

## MMG CONCENTRATE HAULAGE CLONCURRY, QLD

2017 - CURRENT

- » Haulage of half-height containers with zinc and lead concentrate 70km from mine to rail at a rate of 460,000 tonnes per annum
- » Operations undertaken on a six day week basis
- » The haul road is private, enabling us to use specialist equipment with a 150 tonne payload.

## MANGANESE ORE HAULAGE TENNANT CREEK, NT

2016 122,000 TONNES

- » Load and transport 122,000 tonnes of processed manganese ore from the mine to a rail siding for rail to port
- » Project completed in 35 days with 862 trips

## ORE HAULAGE CLONCURRY, QLD

2015 445,000 TONNES

- » Haulage of 445,000 tonnes of crushed ore on public roads with mines 380km apart
- » Utilised 18 road trains, operating 24 hours a day, 7 days a week, completing the job in 7 months
- » A temporary Workshop was established along the haul route for maintenance to support the operation

## IRON ORE HAULAGE BORROLOOLA, NT

2013 - 2014

- » Haulage of iron ore 165km from mine to port at a rate of 3 million tonnes per annum
- » Operations undertaken 24 hours a day, 7 days a week with each unit completing four cycles per 24 hours
- » Utilised a private haul load which allowed 150 tonne payload equipment



# MAJOR PROJECT CASE STUDIES

## GEORGE FISHER MINE

MT ISA, QLD

2018

Wagners was engaged to haul ore 17 kilometers from mine to mine at a rate of 3 million tonnes per annum, backloading 1 million tonnes of tailings per annum with operations undertaken on a 24/7 basis. The contract also included road maintenance involving a 16M grader and a single semi water tanker.

The haul road is private enabling us to use specialist equipment with 150 tonne payload.

Shift by shift the haulage consists of six triple road trains hauling anywhere from 11,000 to 14,500 tonnes of material every 24 hours.

Whilst the haulage is a big part of the operation, we also have a full workshop with eight diesel fitters working around the clock to maintain and service the equipment.

As part of the main contract we maintain the haul road which includes constant grading, dust suppression and bitumen repairs to keep the road in a safe and acceptable condition for our trucks to run on. We use a 16M grader and a single semi water tanker to complete the haul road maintenance.

Our team consisted of 24 employees working on this contract. Wagners' fleet of trucks have the highest standard of safety with GPS satellite tracking and a mix of cameras installed in the cab (driver-facing, forward-facing and side-facing cameras and fatigue monitoring cameras).







## **OAKY CREEK MT ISA, QLD**

### **2018 - CURRENT**

Wagners Transport is engaged to haul rejects from the on-site wash plant back into on-site pits at 1.3 million tonnes per annum.

Operations are undertaken on a 24/7 basis.

As Wagners Transport operates on a private haul road, we can run 180 tonne payload combinations along with a 988 loader, a 16M grader and a road train water cart. We have three C509 Kenworths operating on-site.

We have a total crew of 16; three per crew, including one shift supervisor and two multi-skilled operators that do a rotating 7-on-7-off day/night shift.

We upskill our workforce so that our team is multi-skilled to take on most tasks on-site. This ensures continuity of all operations, so our equipment runs at optimum levels.

Our haul distance varies as the tipping destination changes to anywhere from a 10km to 22km round trip.

We operate a 16M grader that maintains and grades the reject circuit and pits.

A larger payload means we contribute to environmental and operational initiatives with more hauled over fewer loads.

## **LADY LORETTA MINE MT ISA, QLD**

### **2018 - CURRENT**

Wagners Transport is engaged to haul ore from Lady Loretta Mine, 136 km north of Mount Isa, back into Mount Isa Mines at a rate of 150,000 tonne per month.

Wagners' fleet consists of 21 quad and triple road trains working 24 hours a day, 7 days a week on around-the-clock shifts.

Wagners Transport has an established depot in Cloncurry where we have 10 diesel fitters maintaining and servicing the equipment. We have more than 50 employees on this project.

The fleet of trucks maintain the highest standard of safety with units fitted with driver, forward, and side facing cameras. Satellite tracking provides us knowledge of the speed and location of every unit, in addition to fatigue monitoring to ensure the safety of our drivers and others on the road.

## **CAPABILITY STATEMENT**

**Published by Wagner Investments Pty Ltd**

**ABN 66 011 055 271**

**© Wagner Investments Pty Ltd**

**Head Office**

11 Ballera Court, Wellcamp  
Queensland  
Australia 4350

**Postal Address**

PO Box 151  
Drayton North  
Toowoomba Qld 4350, Australia

Telephone +61 7 4637 7777

Fax +61 7 4637 7778

**[www.wagner.com.au](http://www.wagner.com.au)**

